

Name:

Mailing Address:

City/Province:

Employer:

Home tel: ()

Bus tel: ()

Cell tel: ()

Email Address*:

(link to course handouts will be emailed)

PC:

Unit:

PAYMENT OPTIONS

By mail: Complete and send this registration form along with cheque or money order

By Interac™: Register on-line (available after August 25) and pay by Interac™ at www.criticalcareconcepts.ca

Early Bird Payment: \$325 (Course fee of \$287.60 plus 13% HST) if payment in full paid received by October 1, 2012

Regular Fee: \$345 (Course fee of \$305.31 plus 13% HST) if payment received after October 1, 2012

3 post-dated cheques of \$120.00 (\$106.20 plus 13% HST)
First cheque must be MAILED and dated by October 1, 2012 and third cheque must be dated by January 14, 2013

**Course fee includes registration for 6 classes plus access to electronic handouts.
HST # 810090407RT001**

Course Schedules:

All classes are from 0800 – 1500 hrs on Saturdays in the Auditorium

Class	Date
Class One: Cardiovascular competencies	October 13, 2012
Class Two: Respiratory competencies	October 27, 2012
Class Three: Shock, inflammation and coagulation	December 1, 2012
Class Four: Neuro assessment and raised intracranial pressure	January 12, 2013
Class Five: Trauma, acute kidney injury	February 2, 2013
Class Six: Endocrine and GI competencies	March 2, 2013

Note: March 16, 2013 has been reserved as a potential “Snow Date” in the event that a class needs to be rescheduled due to weather

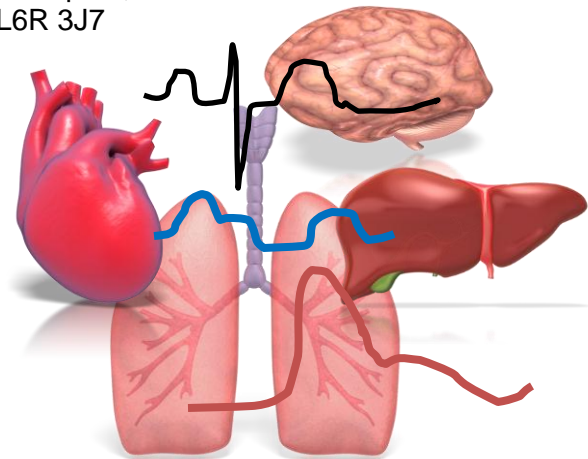
**6 SESSION
CRITICAL CARE NURSING
REVIEW**

Brampton Civic Hospital

October 13, 2012 – March 2, 2013

Auditorium (Main Floor)

2100 Bovaird Dr. E.
Brampton, ON
L6R 3J7



Brenda Lynn Morgan
RN BScN MSc CNCC(C)

About the Workshop:

This course will provide an overview of key critical care competencies that make up the national certification examination in critical care nursing (CNCC-C). This course is of benefit to nurses or paramedics working in critical care who are seeking a review of core competencies, or who are preparing to become certified in critical care nursing.

This course is a review; participants should have some previous critical care experience (with mechanical ventilation, hemodynamic monitoring and ECG interpretation).

Continuous Learning Hours:

Participants will receive 36 hours of Continuous Learning Hours that can be used by certified nurses toward recertification of CNCC(C).

Handouts:

A link to the course handouts will be provided by email within two weeks of the start of the course.

Registration:

Emailed confirmation will be sent that includes the link to course handout material.

A \$30.00 charge will be applied to all NSF cheques. Refunds: 80% of registration fee is refundable if written cancellation is received at least 14 days prior to the workshop. No refund after this deadline.

Directions to Brampton Civic Hospital:

Travel north on Highway 410 to Bovaird Dr. East (north of Steeles and Queen Streets).

Travel two blocks east to Bramalea Rd. The hospital is located on the north east corner of Bramalea Rd and Bovaird Dr.



Email: critcareconcepts@rogers.com

Website: www.criticalcareconcepts.ca

Program Instructor:

Brenda Morgan has been a critical care nurse for the past 33 years, and has > 29 years of teaching experience. She currently works as a Clinical Nurse Specialist in Critical Care at Victoria Hospital in London. Brenda has spoken on a variety of critical care topics: locally, nationally and internationally.

Brenda is a former President of the Canadian Association of Critical Care Nurses (1992 – 1994) and member of the national Board of Directors (1990-1995; 1998-2002). She has chaired 4 of CACCN's national conventions (Dynamics: 1991, 1994, 1999 and 2002) and was a member of the Canadian Nurses Association Certification committee for Critical Care Nursing between 1993 – 2009, and is the author of the on-line certification study guide (CACCN).

Two payment options are available:

Make cheque or money order payable to "Critical Care Concepts" or register online and pay by Interac™

Mail cheques payable to:

"Critical Care Concepts"

• PO Box 37142 • 900 Adelaide St S.
London, Ontario • N6E 3T3

On-line registration:

www.criticalcareconcepts.ca

